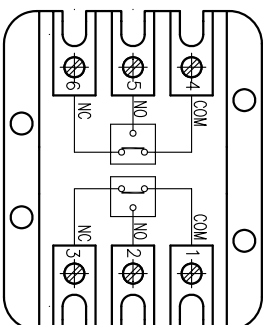
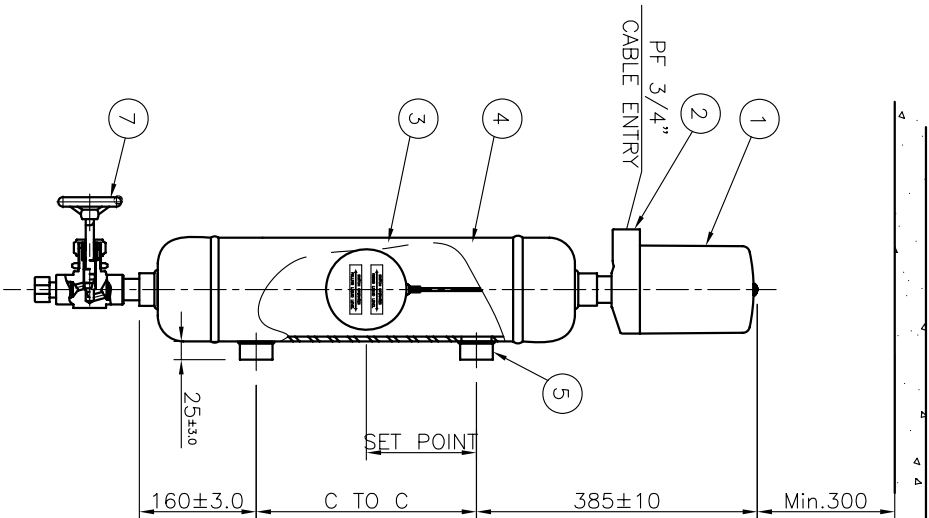


6 SNAP SWITCH



WIRING DIAGRAM



TOTAL Q'TY : - SETS

NO.	TAG NO.	FLUID(UPPER/LOWER)	OPER. PRESS. MAX.(Bar)	OPER. TEMP. MAX.(°C)	SET POINT	C TO C (MEASURING RANGE)	CONNECTION 1"SW 3000# (SIDE-SIDE)	Q'TY
1	-	-	-	-	150	-	-	SETS

OR	OPENS ON RISING LEVEL
CR	CLOSES ON RISING LEVEL
OF	OPENS ON FALLING LEVEL
CF	CLOSES ON FALLING LEVEL
V	SWITCH ACTION

REV.	DESCRIPTION	DATE	DESIGNED	REVIEWED	APPROVED
△					
△					
△					
△					
△					

DESIGN DATA

CODE	KEPIC MGE & ASME B31.1		
UNIT	mm		
ENCLOSURE	WEATHER PROOF	IP65	
ORDERING CODE	PROCESS TEMP.(CONTACT RATING)	SNAP SWITCH MAT'L	
1	Max.120°C (10A 120V AC / 0.6A 125V DC)	PC, PHENOL,304SS	
2	Max.230°C (6A 250V AC / 0.5A 125V DC)	PC, CERAMIC,304SS	
3	Max.400°C (1A 250V AC / 1A 30V DC)	PC, CERAMIC,304SS	
4	Max.230°C (15A 250V AC / 1A 125V DC)	PC, CERAMIC,304SS	
	HERMETICAL SEAL TYPE		

NOTES

1. REFER TO INSTALLATION MANUAL
2. WHEN YOU SET IT UP
3. CABLE SIZE : 14 AWG.
4. DEAD BAND IS 15mm FIXEDLY ABOVE THE HEAD FOR INSTALLATION / REMOVAL AND MAINTENANCE
5. CABLE CONNECTION IN TERMINAL PART VIA CLAMPED RING TYPE
6. PAINTING SPEC : SEQUIN STD.
7. TEST FOR WELDING : HYDRO+PT TEST
8. CHAMBER ORDERING INFORMATION.  
SMC-75CH-A-1-A-1-A-1-A-1-A

BILL OF MATERIAL

NO	DESCRIPTION	MATERIAL	QTY	SPECIFICATION	REMARK
7	GLOBE VALVE	-	1	NPT 1/2"	
6	SNAP SWITCH				
5	PROCESS CONNECTION	A105	2	1"SW 3000#	
4	CHAMBER ASS'Y	A105g, 1/2x2 WER	1	5" Sch.40	
3	FLOAT	316LSS	1	ø110	
2	BASE	AC2B	1		
1	COVER	C.S	1		

TITLE  
VERTICAL FLOAT TYPE LEVEL SWITCH  
SMC-75B-1-A-1-A-1-A-1  
ASSEMBLY DRAWING

MANUFACTURER

Seojin Instech Co., Ltd.

SCALE	1:1	REV	1
DATE	2015-01-15	DATE	2015-01-15
NO	1	NO	1